

BTEC Level 7 Strategic Management and Leadership

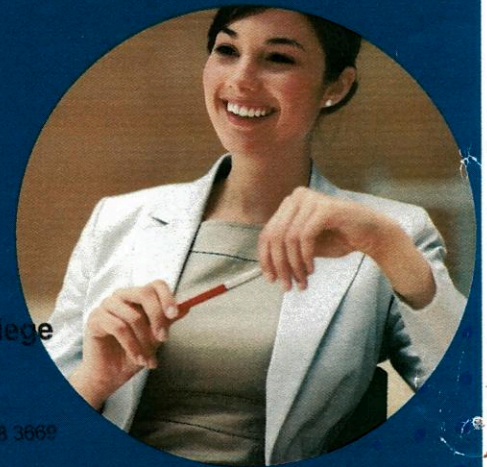
Providing the leaders of tomorrow with the skills they need today

BTEC Level 7 Strategic Management and Leadership qualifications are the highest level BTEC qualifications currently available, and are taught at a comparable level to Post-Graduate courses (e.g. MBA). The qualifications are vocational programmes which help learners develop practical skills, alongside knowledge and understanding of business. The qualifications are linked to professional body requirements and UK National Occupational Standards, with a clear work-related emphasis.

Who should study a BTEC Level 7 qualification in Strategic Management and Leadership?

BTEC Level 7 Strategic Management and Leadership qualifications provide business men and women with an insight into strategic management and leadership, helping career-minded individuals who are looking for:

- Entry on to masters' degrees including MBAs
- Career progression in their current industry
- Career progression into a new industry
- Job market entry at a higher level



Severn Business College
 806 High Road Leyton
 London, E10 6AE
 United Kingdom
 Tel: 020 8539 1149 Fax: 020 8988 3669

What qualifications are available?

Four qualification sizes are available (Award, Certificate, Diploma and Extended Diploma) giving candidates the choice of anything from the full-time 1 year Extended Diploma course, down to the Award which can be completed in a couple of weeks as an intensive short course. This allows great flexibility to meet students' needs. All courses can be studied full-time or part-time, depending on your chosen centre of study.

Qualification	Credits	Units	Who should take this course?
Extended Diploma	120	10-13	Comprehensive qualification for career progression or for candidates looking to complete a MBA or similar masters' degree . Typically studied over 2-years part-time, or 1-year full-time.
Diploma	60	6-7	Excellent all-round course for candidates looking for career progression in their current role, a new industry, or progression to MBA or similar masters' degree . Typically a part-time 1-year course.
Certificate	20	2-3	Ideal for part-time study over 4-6 months, for candidates looking for career progression .
Award	10	1	Great short-course for candidates looking to bolster their CPD .

Each qualification covers all of the content of any qualification smaller than it - that is any qualification that covers fewer units. This means a candidate may complete the Award, and then go on to do the Certificate being required only to complete an extra 1-2 units, rather than having to do the full amount (2-3 units). This allows candidates to progress within the range of BTEC Level 7 qualification sizes: from Award to Certificate to Diploma to Extended Diploma.